



## Pilgrim 40

### A MOTOR YACHT OF DISTINCTION

The amount and content of information that you are about to digest is offered to answer the most common questions, collected from people like yourself, attracted to the **PILGRIM 40**. These answers are meant to help you in your assessment to purchase your very own **PILGRIM**. Therefore, our brochure will endeavour to let you know as much about the **PILGRIM** and the people surrounding her, as is possible, without meeting us all in person. It is different than most brochures, but ours is meant to do more than most, just like the **PILGRIM 40** is meant to be more than most boats. We're only trying to help you decide, right now, if our Boat is worth pursuing further... or not. We think that is why you wanted a Brochure. That's what we'll try to deliver.

We've been told we're building and marketing more than just a Boat. We're offering a new, exciting, alternative lifestyle. The **PILGRIM 40** has been developed as a means of achieving this aim, for **PILGRIMS** like yourself—those who want to taste more of life. Used as a weekender, for vacations, for the ultimate retirement experience, or as a full-time home, escaping the jungle of concrete and asphalt, the **PILGRIM 40** can put a sense of adventure into all or any of these applications. If you are a frustrated **PILGRIM**, you will appreciate how the **PILGRIM 40** can become your passport to Civilized Adventure in a Nautical Living Environment.

#### Where Has The Pilgrim 40 Come From?

For those who are seriously considering a **PILGRIM** purchase, we feel that a brief history is as important to you, the potential buyer, as yeast is to bread. As with anything new, you want to know where she, and we, have come from.

In 1971, H. Ted Gozzard (the designer and builder of the **PILGRIM 40**) made a major step in the evolution of his Boat-Creating Talents. He started designing boats around the way people were actually using them, rather than for some other purpose. Let's be honest. Most of us don't want a boat only to win races or cross oceans. We just want to enjoy ourselves on the water. It is our belief that Pleasure Boating is for Pleasure... but more on this later.

Ted's design evolution first appeared in the Boating Marketplace as Bayfield Yachts, a new line of Sailing Auxiliaries, offering a refreshing alternative to those looking for a Cruising Sailboat. The Bayfield Concept was readily accepted by sailors all over North America. With Ted's and other energies, Bayfield became one of the largest and most successful production yacht builders in Canada, still operating under new ownership with over 1,000 boats, 25' to 40', made to date.



Ted Gozzard

Ted is not just a Designer, he is an Artist. To become a Designer, you need only pass exams. What Ted has, comes naturally. He can work a concept and envision it three-dimensionally, modify it's structure in this malleable form, then sketch it, draft it, make a model of it to confirm that it pleases the eye, loft it, tool and then build it, right down to the finest carpentry detail. The best in any field of endeavour, comes from those who can express their talents naturally. Ted is from this mold.

Another prime moving force in this growth through Bayfield Yachts, was Gary Ferguson. A lover of the water and a market specialist, Gary provided valuable input, from his years of practical business and boating experience, to Ted's design criteria. His understanding of the boating consumer helped Ted zero in on what a certain boat buyer is really looking for, rather than what may be currently popular in a marketplace dominated by look-alikes. Gary likes to specialize in developing new things for people, creating viable alternatives.



Gary Ferguson

In 1978, Gary left Bayfield Yachts to pursue other interests at home and abroad. At the same time, the concept for a new type of Motor Yacht was developing, through his continued exposure to the boating market in concert with his love of boating. In 1980, Gary discussed the ideas of this new concept with his old friend, Ted Gozzard. They agreed that there was a style of boat missing from the marketplace completely. There was a need to fill this gap.

When Ted left Bayfield in 1981, the **PILGRIM** Concept developed further, with continued and practical research into how most pleasure yachts were actually used. Criteria were assessed and re-assessed until the **PILGRIM** was first laid to paper in September of that year. By January '82, three drafts, many sketches and two models later, the **PILGRIM** Project was born. A new joint venture was then formed. Lofting started, while all the other necessary elements were put into place.

With Ted's range of talents including designer, tool-maker and shipwright, the **PILGRIM** had the opportunity to progress even further as she was tooled through 1982. In January '83, the first production boat was started for sea trials in April and May. Passing these with flying colours, '*FINALE*', the first production **PILGRIM 40** premiered to Rave Revues in Toronto early in June.

A year later, hull #11 was being commissioned in Annapolis, Maryland, with others as far away as California and Florida. Having now built a successful foundation, the future will see a continuing expansion of production, a dealer network to better service our customers, as well as the introduction of new models, smaller and larger, expanding the **PILGRIM** Concept.

So much for history...

### *The Pilgrim Concept And Philosophy*

We have learned a lot from our depth of study of Boating and Boaters over the past 15 years. We have watched what actually is going on in harbours all over North America. We have observed how most people have a chance to actually use their boats. We have analyzed what people say they enjoy most out of their Boating. We also recognize that current lifestyle and/or retirement options do not satisfy everyone. We then turned this survey into a consumer-based list of criteria for the **PILGRIM 40's** design.

Specifically, in what follows, we will try to explain these criteria which you, the Boating Market, told us you wanted most of all. They follow in no particular order, as preferences varied with personalities and Boating area. To us, they have been treated as equally important facets of... the "Perfect" Boat, for today's Boater.

### *Character, Style And Grace—What We Call... Pilgrim Class!*

Ted Gozzard is a little eccentric—thank heaven! He actually believes—"A Boat's got to look right to work right." This is where **PILGRIM's** Class stems from.

As we have stated previously, we believe that a Pleasure Boat is for Pleasure. Few Pleasures are worth more. It just doesn't make sense to us, in today's fast-paced and delicately balanced world, to want a boat that's just a continuation of the complicated race that we have to cope with in our struggle to make a "success" of our lives. There are enough companies building "fast" boats like these already. We feel that it's Time for a Change!

A Boat should be an escape from these pressures of day-to-day existence—a change of Tempo—something to refresh your spirit—to put a smile on your face and in your heart. You see, we're from the "Stop and Smell the Roses" School of Boating.



It's a great feeling for us to see the smile on our owners' faces when they're asked—"Who owns this great Boat?" They already understand and enjoy what a **PILGRIM 40** really is. We know that they're going to be the centre of attention, every harbour they pull in to.

That is another part of the **PILGRIM's...Class**, other than her striking looks, that can only be discovered from pride of ownership. She proves Class is more than just overall length.

Her classic and proven displacement hull, with plumb bow and fantail stern, her gently arched windows, her varnished mahogany trim, her sheer line, her cosmetic detail—all combine to create an impression about herself and her owners, that only one's own eyes and not our words can explain... that feeling of **PILGRIM Class!**

Note photographs may show optional equipment

### *Pilgrim Comfort—Inside And Out*

Comfort is a personal thing. We equate comfort with pleasure and enjoyment. This is one of the areas that occupied most of our research and study.

We found almost no one that enjoys weathering through a storm. Although there is a sense of satisfaction in making port after putting up with Mother Nature on one of her ugly days, the majority of us seem content to avoid bad weather, if at all possible. If you can be honest with yourself, you'll recognize that most of us seem to be Fair Weather Boaters.

We discovered that a majority of people spend most of their time on their boat in the various ports, rather than underway between them, again in fair weather. This was true in *EVERY* harbour we studied, without exception. Just look for yourself.

We ascertained that most yachts under 45 feet, power or sail, inexpensive or the most expensive, were claustrophobic and confining with actual extended use. This is because most designers insist on making their owners live below deck, rather than on deck. This popular design misconception also creates a boat with excessive freeboard, making it at least difficult, just to get on and off. Walk up and down the docks in your harbour and confirm that what we're saying is true.

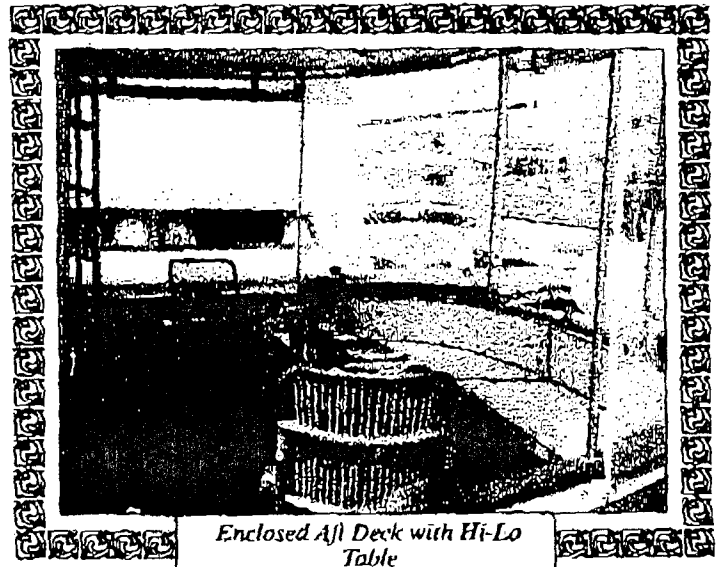
To us, the strangest enigma of all is the obsessive need to sleep as many people as possible. Having guests on your boat or in your home, usually is at least a strain for any extended period of time. We all squeeze the toothpaste differently. Most boats are designed with the majority of their potential living space, allotted for nighttime rather than daytime use. Quite honestly, we think that's backwards. Again, a boat should be designed around how her owners, by themselves, actually use her, rather than around part-time guests. In your shore residence, would you sacrifice your livingroom for a permanent guest bedroom? Sharing your pleasure with your family and friends is a wonderful experience, but not all the time, at the expense of the owners' pleasure.

In our study of boats underway, we discovered that most sailboats spend a great deal of time under power. All sailors know that to cruise where you want to go usually is in opposition to where the wind is coming from, especially in the close-quartered cruising areas we seek out at vacation time, when we use our boats the most.

We observed that the majority of larger powerboats cruise at 10 knots or under, a large percentage of the time, even though many are capable of much more. High performance seems only important to those, usually new in Boating, who have yet to wear out the thrill of rattling their kidneys and their dishes, not to mention their pocketbooks, just to keep their fuel tanks filled.

These highlights of our observations of You—the Boating Market—had a significant influence on our understanding of what the "Perfect" Motor Yacht—our unique and distinctive **PILGRIM 40**—should be.

Let us take a walking tour of the **PILGRIM 40** to try and illustrate to you how we have interpreted our Research into Reality.



*Enclosed Aft Deck with Hi-Lo Table*

We slowly absorb her pleasing lines as we approach. She certainly is a stand-out. Stepping aboard is easy, through our boarding gates port and starboard. Our main deck is about the same height as the average dock, so you don't need ankles like Tarzan just to get on and off. You notice that the side decks are wide, uncluttered and covered, making passage to the after deck no problem. The after deck (what we call the verandah deck) is one of the best comfort spots on the **PILGRIM**. It's a wonderful place to sit and relax. With the addition of a couple of comfy chairs, you can easily accommodate a half-dozen people for happy hour. This covered, and as a result, shaded space, can be closed in with doors, vinyl curtains and screens, to make a usable space in any weather, even when the mosquitoes or no-see-ums are out.



*Modified Open Plan Looking Forward*

Still on the same level, moving forward through two full-sized sliding doors, we come into the spacious main saloon of the standard interior plan. With the double solid mahogany doors open, surrounded by seven big, bright windows and a marvelous overhead skylight, it has an exaggerated sense of depth, beyond its actual dimensions. Most of our owners furnish this cabin with a pull-out couch for their part-time guests, and a couple of comfortable livingroom-type chairs. With the addition of these personal decorating touches, it makes a great main saloon, as well as a unique guest cabin when required. A door and folding panel quickly close it off to ensure privacy when made up as a guest bedroom. The finish detail throughout is rich varnished mahogany, creating an air of old-fashioned elegance. Flow-through ventilation is provided through 5 full-sized opening windows, the skylight and 4 doors on the main deck level. One of our windows equals about a dozen normal-sized opening ports.

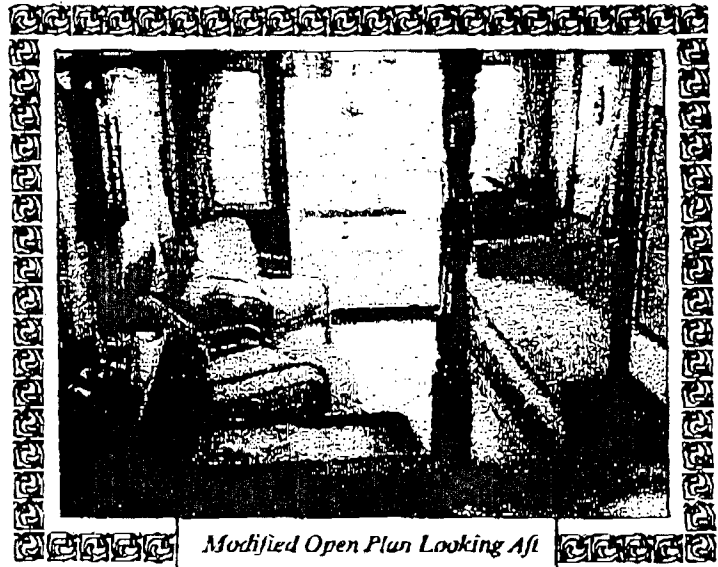
The galley contains all you need for comfortable coastal cruising: a three-burner propane stove and oven, double stainless sinks, 12 volt/110 volt refrigerator/freezer, lots of counter space and lots of storage space. It's bright and airy, making the cook's job more enjoyable. It feels more like a kitchen than a galley.



The main head has a small tub/shower, vanity sink, and mirror and two cupboards. It's very functional, yet cozy. That's what a head is supposed to be.

#### A Basement?

Yes! Lifting up the hatch in the sole between the head and galley reveals a stairway to the Basement. Here is that room you may need for an apartment-sized washer/dryer, freezer, lots of gear, generator, wine/liquor/beer/pop locker, even access to most of the ship's systems for quick maintenance checks. Who else offers such a practical thing on a liveaboard 40' boat?



Stepping back up into the bridge is like stepping into a solarium. Surrounded by tempered glass, visibility is excellent. Deck access is only a matter of a step or two, through the sliding bridge doors port and starboard, to make docking easier, even single-handed. A special dash vent and those two sliding doors make for excellent ventilation. The helmsman's seat (single or double) folds down out of the way when not required. There is an above-average amount of room to spread out charts and navigation equipment; add radar, auto-pilot, loran, radios—you name it. A large wood-spoke wheel, 5" binnacle compass and easy to read instrumentation, complete the skipper's package. You'll discover it feels more like a ship's wheelhouse, rather than the average helmsman's station.

Opening a door and a folding panel to port, reveals the companionway to the owner's forward stateroom, our only permanent night-time space. An opening glass hatch and three opening ports make for good ventilation and light for our only below decks cabin. A tapered queen-sized berth, with access on three sides, makes for undisturbed and restful sleeping. A vanity sink and mirror hide under a lifting panel on top of the bureau, for use when needed. There are three very large hanging lockers, lots of drawers, shelves and an upholstered dressing seat, to finish off your bedroom appointments. A second head can even be added, if required.

Coming back on deck and going forward, we find our easy-to-work foredeck and comfortable foredeck seat, another great place to sit back and enjoy the ride. Moving easily to the aft deck, pulling out the space-saving upper deck stairs, we gain access to the boat deck and optional sunbridge. There is another 30' x 14' boat up here, for those who like the sun and the flexibility of an alternative steering and/or sitting station. Lots of room for dinghies, storage, people, etc.



Sun Bridge Package (cover not shown)

Intentionally, we have given you as many different places to sit and relax as is possible, especially compared to the average tri-cabin. We think that's the secret to fighting Boat Claustrophobia. Normally, all our "competition" offers is a combined bridge, galley, main saloon and dining area for one and a bridge/boat deck for two. The **PILGRIM** offers 5-7 comfort zones depending on your personal preferences when spec'ing out your Boat. This helps make your Boat feel much bigger and more liveable in actual use.

#### **Pilgrim Safety, Reliability And Performance**

The **PILGRIM's** commercial heritage ensures a seaworthy yacht. We've actually been called an Ocean Going Home. Her hull is very similar to a Great Lakes fish tug, in service for many decades. A commercial tug can't earn a living by running for cover every time Mother Nature decides to flex her muscles. It is made to close up, keep working and weather through. The **PILGRIM 40** inherits these traits.

Her glass laminate is heavy and second to none. We warranty it for 10 years. She has a heavy rub-rail and a straight-run keel with protected prop and rudder. With good buoyancy fore and aft, she rises easily to a rough sea. Her roll is dampened by her hard chine aft, her full keel and by installation of her tanks, (4,500 lbs. of moveable ballast), completely midship and outboard. All her window glass is tempered to handle white water if you're caught in extreme conditions. For those with a taste for extended offshore passages, an optional flopper-stopper riding sail will increase crew comfort even more.

Her wide side decks, high bulwarks, lack of toe-stubbers and well-spaced hand holds make the crew's work simpler. Even children and pets can be allowed to roam safely, without undue concern.

Propane storage is in the stack on the upper deck, which, with electric on/off solenoid, makes the safest installation possible. Even the insurance companies like it.

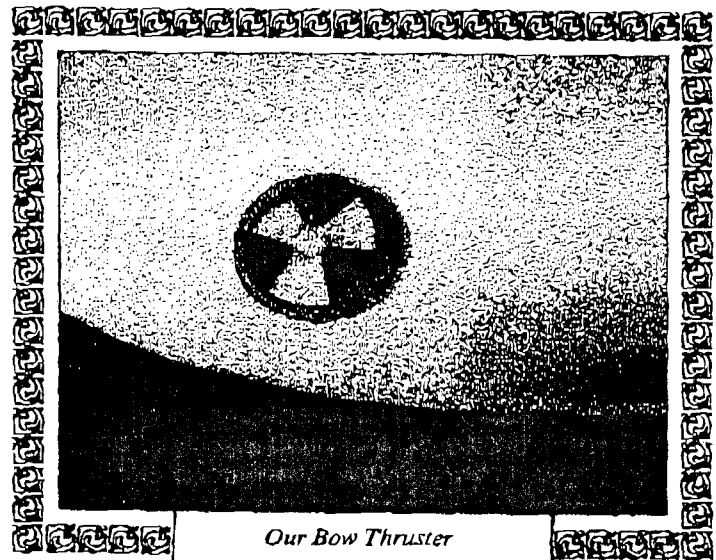
The main diesel engine we have selected is one of the best and most reliable on the market. It would run immersed in water if it had to. Double filtered fuel ensures clean diesel with appropriate maintenance. There is even an emergency tiller for emergencies. You see, we've paid a great deal of attention to safety and reliability, even when the unforeseen occurs.

Performance is leisurely, with about a 10 knot maximum speed (depending on load) and a cruising speed of 8-8½ knots. Rather than being pre-occupied with how quickly we can get from one harbour to the other, the **PILGRIM** lets you learn how to slow down, enjoying the pleasures of the cruise itself, rather than just the pleasure of reaching the destination. Remember, we're from the "Stop and Smell the Roses" School of Boating.

#### **Pilgrim Ease Of Handling**

Sailors used to a single-screw displacement hull's handling, will immediately feel confident with a **PILGRIM 40**. She's very predictable.

Power Boaters used to the expensive choice of twin engines just to dock their boat, will gain confidence very quickly. Once they get used to how our large prop and rudder, coupled with our bow thruster, work in unison, they'll be able to make their **PILGRIMS** perform a graceful dance. As far as we know, we're the first and only Production Yacht Builder anywhere that offers a bow thruster as standard equipment. It's common sense to us. We think you'll see it won't be too long before our common sense is copied. We intend to expand and continue this innovative leadership in the Marine Industry.



Our Bow Thruster

Out of harbour and underway, the **PILGRIM** tracks straight. None of the pesky wandering that's standard in most other Motor Yachts. Her full length keel, takes most of the helmsman's tedious work away. The addition of an auto-pilot, for those looking to cruise extensively, frees the skipper up completely, so he can move around and enjoy the ride more. That's another important aspect of... **PILGRIM** Comfort.

With our straight run, moderate draft keel, ensuring a protected prop and rudder, you can easily gunkhole. Exploring those scenic and interesting anchorages, that boats with exposed props and rudders have to pass by, allows you to enjoy more of Mother Nature's Bounty and Beauty. Isn't that one of the aspects you enjoy most about Boating?

### **Pilgrim 40—Practical And Efficient**

Inside and out, the **PILGRIM 40** is made for how you actually use a boat. Therefore, she picks up the compliment all the time of practicality and efficiency. Only by personally inspecting a **PILGRIM 40**, will your eyes tell you what our words will fall short in explaining.

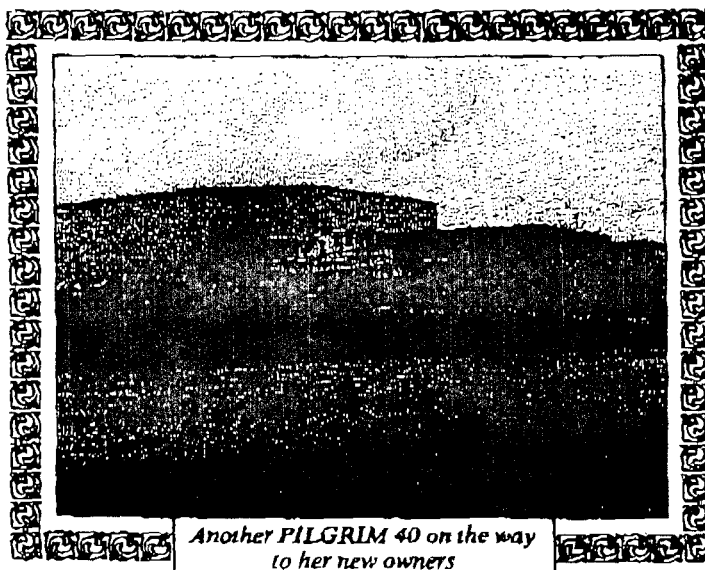
From her bow thruster, miserly single engine, and cruising speed hull form, to her verandah deck, side decks, complete interior design, basement, sun deck - everywhere you look, she answers back—"I'm practical and efficient". Every inch of a **PILGRIM 40** is meant for you to use. She quite simply makes a lot of sense.

### **Pilgrim 40—Economical To Run And Maintain**

How about 1.6 U.S. gallons/hour (at an 8 knot cruise) for a fuel consumption? Translated, that's about \$250.00 for a 1,000 nautical mile cruise in the U.S. We don't know of anything else that offers better fuel economy in this size range.

Her all-fiberglass hull and superstructure can be maintained with just soap and water. Once a year, you may want to give her hull and cabin sides a wax, keeping her vertical structure shiny and new-looking. Standard exterior wood trim can be lightly sanded and re-varnished in one day, by the average cruising couple... or, job it out to your crew.

Engine, mechanical and electrical maintenance is negligible, varying with how much you use your boat. Every maintenance point is easily accessed. Bottom paint and zinc replacement top off maintenance every year or so, depending on where you boat.



### **Pilgrim Quality Construction**

If you've got a friend who's a carpenter, have him look at the joinery we use in our handrails, drawers, doors, hatches or for that matter, anywhere else on the boat. It's First Class! Inspect and compare our fiberglass work and core samples. Even a 300 pounder won't flex our 'glass. Check how neat our easily accessed mechanical, electrical and plumbing systems run throughout. Even adding gear in future is a simple enough task for each owner to attempt. Seacocks, not gate valves, are on any thru-hull below the waterline. We've been around long enough to know such attention to detail is good for you and for us.

We're not perfect, nothing is... because perfection is an ever-growing ideal... but we sure keep trying to be!

### **To Whom The Pilgrim Concept Appeals**

The **PILGRIM 40** is not for everyone.

On the other hand, our consumer demand confirms that our distinctive Motor Yacht appeals almost equally among sailboaters, powerboaters and non-boaters. This has created a larger than normal market acceptance. Therefore, the **PILGRIM** can be for everyone.

To some, her manufacturing cost excludes them from an immediate purchase because it is beyond current budgets. It's a move many will have to plan for, but what a great goal in life to work for... to be a **PILGRIM** on your very own **PILGRIM 40**. However, if you live in a climate where it can make sense to use your boat as your "Home", she's a Bargain and a Joy as a piece of moveable real estate.

As Boaters ourselves, we cannot imagine a better craft to provide the ultimate Retirement Adventure... the Alternative Home... or the memorable summer residence, as a reward to a hard-working and successful life.





*She looks good with or without  
the Swbridge*

The current retirement alternatives do not offer much to those who have achieved something in their life and are just not ready to be put out to pasture. The **PILGRIM 40** can put a sense of freedom into your Retirement Adventure.

For those not yet ready to retire, whether you're 30 or 50, the **PILGRIM 40** offers an alternative lifestyle that surpasses land-based norms. There is a camaraderie in a boating community that is non-existent in a cement high-rise or suburb. You become more involved with the heartbeat of life as you are more aware of Mother Nature and her ever-changing moods, something you lose touch with in a big city. You also cannot take your land-based home out for an evening cruise or an adventurous vacation. It's so much more than a summer cottage. Such flexibility has led many to call the **PILGRIM** a "Boataminium".

So, if you're a Sailor who's tired of fighting with huge headsails, getting soaked in an open cockpit and living in an expensive teak tube, all at a 15° heel, you're ready to consider the **PILGRIM** Alternative.

If you're a Power Boater who's tired of taking a loan out every weekend to feed your fuel-guzzling twin engines, having ankles like a weight lifter's just to get off and on your boat, not to mention frustrated with a boat designed around the number of berths it has, you're ready for the **PILGRIM** Alternative.

Even if you're a Non-Boater, looking to re-discover some excitement in your lifestyle, the **PILGRIM** Alternative is a means to a new way of living, for those hearty enough to seek out more in their lives. Are you ready to be a **PILGRIM**?

### Where Do We Go From Here?

We could go on. There's much we haven't told you. However, the final decision to buy a **PILGRIM 40** will not come completely from this brochure, no matter how informative and entertaining we have tried to make it. If what we've said makes some sense to you, you need to meet a **PILGRIM 40** in person.

In our opinion, we have conceptualized, designed and are trying to build *THE* "Perfect" Motor Yacht...for You. We want to build you the best damn Boat possible! If you can recognize this and agree, there are two successes—yours, in finding the Boat you've been searching for, and ours, in being able to provide it for you. What more could each of us ask for?

We really believe that we can turn your Dreams into Reality!

For a personal inspection, contact:

**Pilgrim Marine Sales Inc.**

100 Rosedale Valley Road  
Toronto, Ontario, Canada M4W 1P7  
416-920-6059

Questions:

---



---



---



---



---

Limited Warranty—Details on Request

Authorized Agent